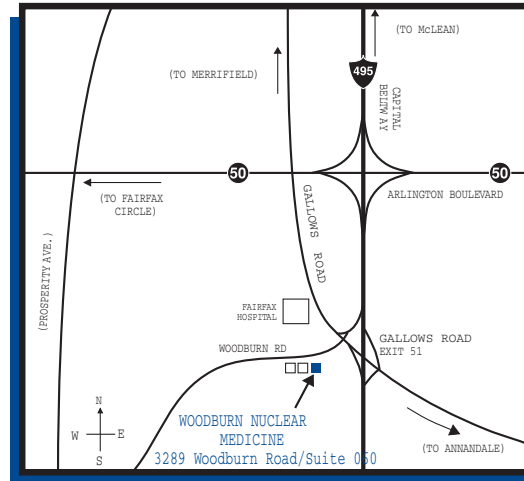


## Welcome to Woodburn Nuclear Medicine!

Your physician has referred you for a Rest MUGA Scan. Our goal is to provide the best possible medical care for you and your family. Patient care is our top priority. Our staff is available to answer questions and ensure your comfort before, during, and after your exam.

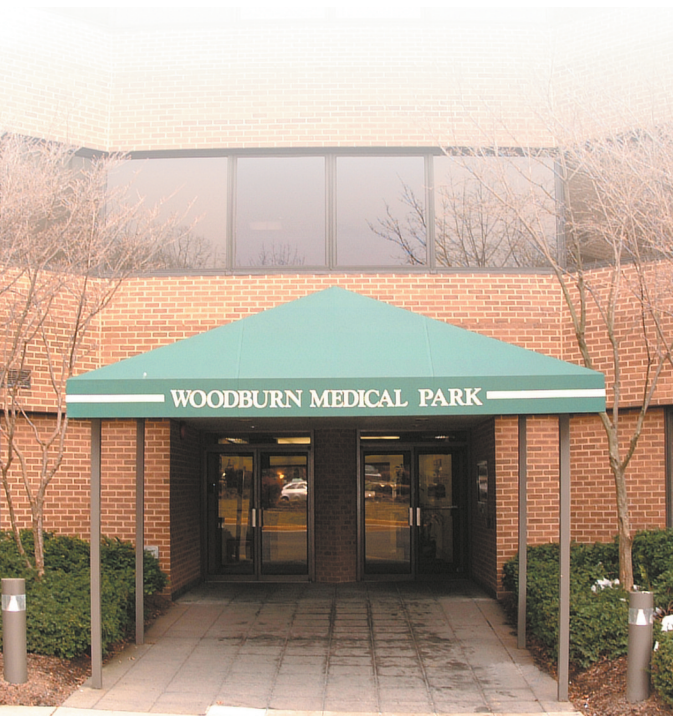
*Our facility is conveniently located and is wheelchair accessible.*



### Directions :

**Route 495 South:** Exit 51 (Gallows Road)  
Proceed straight across Gallows Road onto Woodburn Road to the first building on the left.

**Route 495 North:** Exit 51 (Gallows Road) Turn left onto Gallows Road then left onto Woodburn Road to the first building on the left.



**Woodburn Nuclear Medicine  
Metro Region PET Center**

3289 Woodburn Road • Suite 060  
Annandale, VA 22003  
Phone: (703) 698-0666 • Fax (703) 573-6120  
[www.woodburnmed.com](http://www.woodburnmed.com)

## Rest MUGA Scan at Woodburn Nuclear Medicine



Patient Name: \_\_\_\_\_

Appointment Date/Time: \_\_\_\_\_

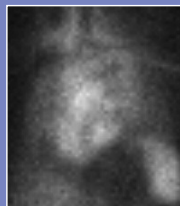
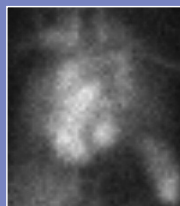
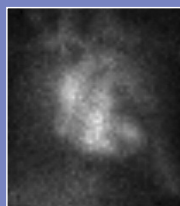


**Woodburn Nuclear Medicine  
Metro Region PET Center**  
**Phone: (703) 698-0666**

## What is a Rest MUGA?

MUGA stands for **m**ulti-**g**ated **a**cquisition. A rest MUGA is a nuclear medicine test to measure the ability of the heart to contract. Less than a tablespoon of blood is removed and labeled with a tiny amount of radioactive material called Technetium. The labeled red blood cells are injected back into you.

A special type of camera is used to take pictures of the heart. Small patches attached to the arms, shoulders or chest measure the electrical activity of the heart. This allows the camera to take pictures that will be turned into a movie showing the heart contracting.



## How Long Will This Test Take?

It takes 20-30 minutes to label the red blood cells with Technetium. The pictures take 30-45 minutes to obtain on the camera. The length of the picture taking depends on the heart rate and the regularity of the heart beating. The entire process normally takes 1-2 hours.

## How Should I Prepare For the Test?

No preparation is needed.

## Why is This Test Usually Performed?

MUGAs are used to measure how well the heart contracts. The largest pump of the heart is called the left ventricle. It pumps blood to the whole body. Some medicines injure the heart muscle's ability to contract and regular measurements are needed. Sometimes our heart muscle is weak or too thick. The MUGA scan can determine the blood volume pumped through the left ventricle of your heart.

## What Will I Experience During the Scan or Picture Taking?

During a MUGA, the camera will be placed over the heart. Three or four pictures will be taken of the heart in different angles. You must lie still for these pictures.

## What if I Might be Pregnant?

Generally, nuclear medicine tests are not performed during pregnancy. All women of child-bearing age will be asked to affirm that they are not pregnant. Exceptional cases will be discussed with your referring physician.

## Will I Be Exposed to Radiation?

The radiation in a MUGA scan is comparable to that received in two chest x-rays. The tiny amount of radioactive material used for the MUGA is rapidly eliminated from the body.

## Are There Any Reactions to the Injections?

The radioisotope used for the MUGA scan is non-allergenic and produces no adverse reactions.

## When can I resume normal activities?

You can resume normal activities immediately after the scan is finished.

## When Will My Doctor Receive the Results?

The typed report is faxed to the doctor's office, usually the same day as your scan. A full typed report arrives in the mail in one to two days.



*At Woodburn Nuclear Medicine, we perform MUGA scans and other nuclear medicine studies in a comfortable, outpatient environment.*



**Woodburn Nuclear Medicine  
Metro Region PET Center**

**Phone: (703) 698-0666**